



# LIVE AT THE BEACHFRONT

## THE PULSE BEACHFRONT

A development by  **DUBAI SOUTH**

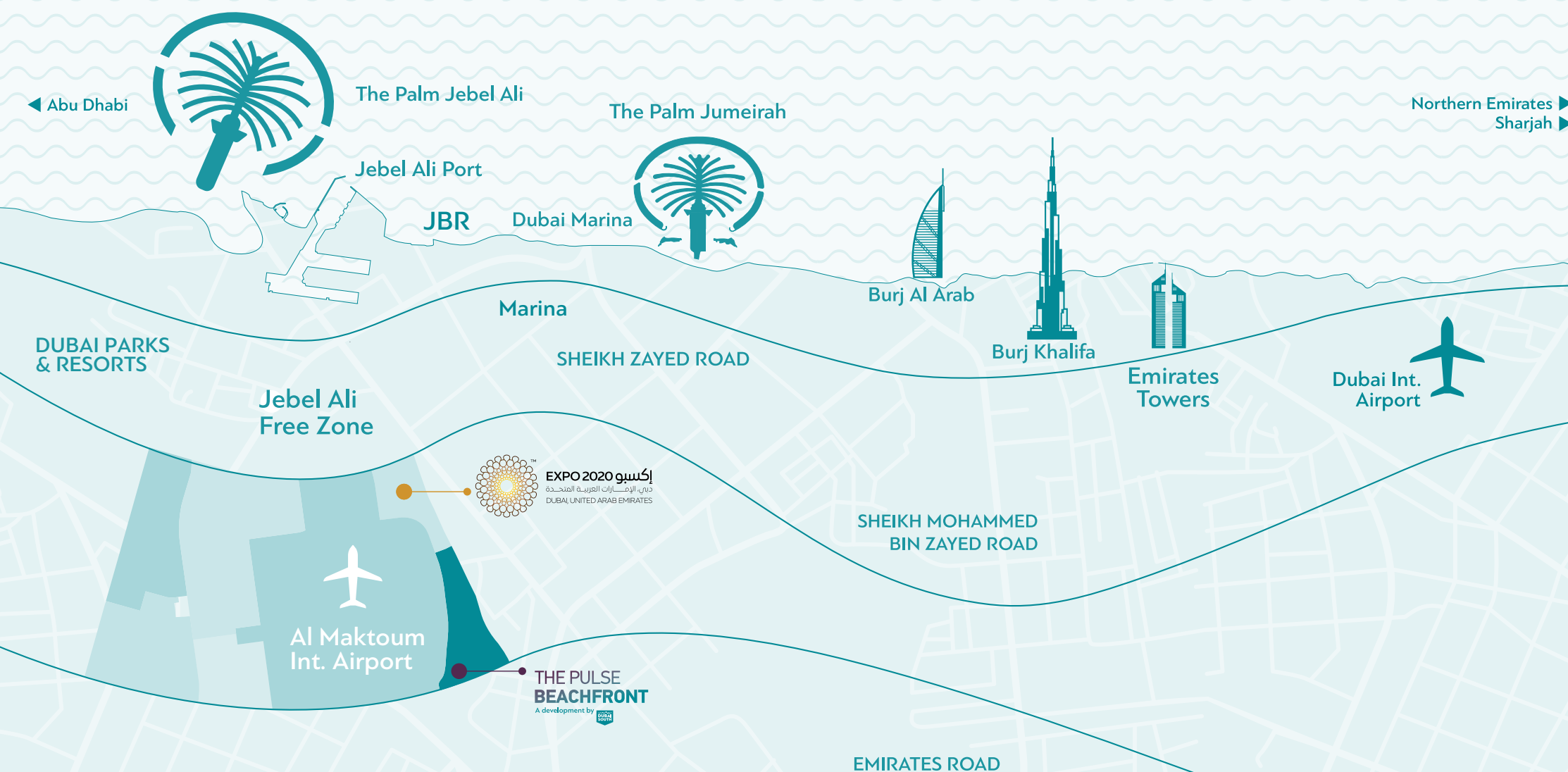


# THE PULSE BEACHFRONT

A development by







## DUBAI SOUTH

The perfect place to work, live and invest

A master-planned city built to create happy, creative and empowered people. Strategically built around what will be the world's largest airport, Dubai South will be home to a population of over 500,000 people by 2025, and is host to EXPO 2020.

This is an inclusive and cohesive community, supported by a smart and sustainable environment.





# THE PULSE BEACHFRONT

A development by



## THE PULSE BEACHFRONT

The Pulse Beachfront is a beautiful fully-gated villa community at Dubai South Residential District. At its heart sits one of its most stunning features, a turquoise sandy beach pool. Here is where you can live & play in a natural environment, with private gardens, ample green spaces & plenty of child friendly activity centres.

## MASTER PLAN



# THE PULSE **BEACHFRONT** PHASE 1

## **DELUXE**

3BR Townhouses  
Semi-Detached 3BR villas  
Semi-Detached 4BR villas

## **PREMIUM**

3BR Semi-Detached Villas  
4BR Semi-Detached Villas  
5BR Semi-Detached Villas



### LEGEND

- Deluxe 3BR Townhouses
- Deluxe Semi-detached 3BR villas
- Deluxe Semi-Detached 4BR villas
- Premium 3BR Semi-Detached Villas
- Premium 4BR Semi-Detached Villas
- Premium 5BR Semi-Detached Villas





# THE PULSE **BEACHFRONT** PHASE 2

## **PREMIUM**

3BR Villas with rooftop  
4BR Villas with rooftop  
5BR Villas with rooftop



LEGEND

Premium 3BR Villas with rooftops

Premium 4BR Villas with rooftops

Premium 5BR Villas with rooftops





THREE BEDROOM  
PREMIUM

UNIT	THREE BEDROOM
BUA	2753
GARDEN	1700
ROOF TERRACE	468
Areas presented in square feet	

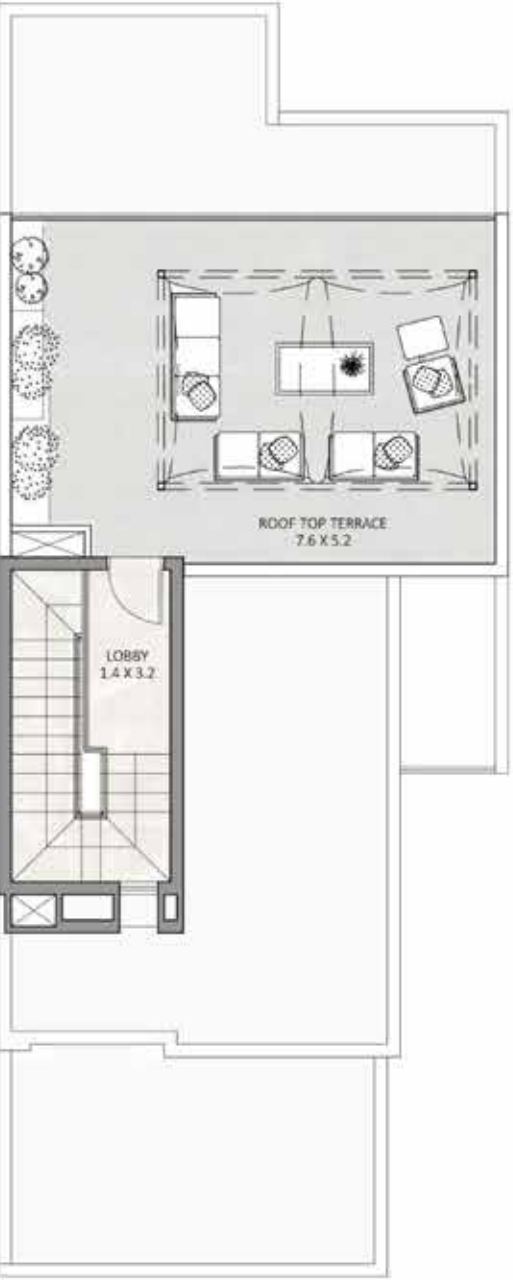
GROUND LEVEL PLAN



FIRST LEVEL PLAN



ROOF LEVEL PLAN



FOUR BEDROOM  
PREMIUM

UNIT	FOUR BEDROOM
BUA	3341
GARDEN	1841
ROOF TERRACE	529
Areas presented in square feet	

GROUND LEVEL PLAN



FIRST LEVEL PLAN



ROOF LEVEL PLAN





THE PULSE  
BEACHFRONT  
A development by DUBAI SOUTH

FIVE BEDROOM  
PREMIUM

UNIT	FIVE BEDROOM
BUA	4196
GARDEN	1900
ROOF TERRACE	619
Areas presented in square feet	

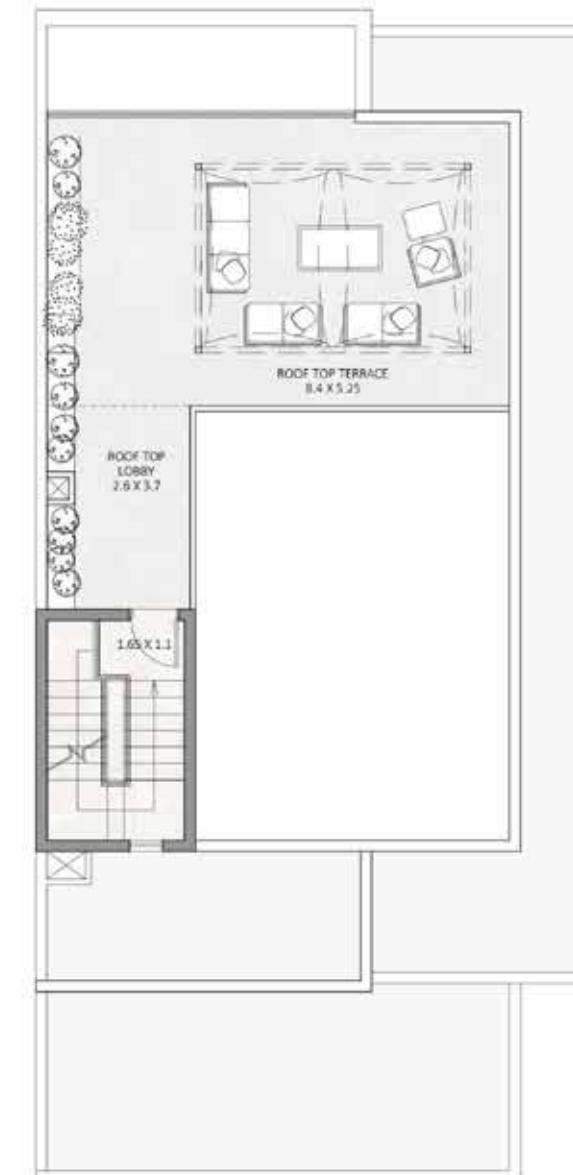
GROUND LEVEL PLAN



FIRST LEVEL PLAN



ROOF LEVEL PLAN



TYPICAL FLOOR PLAN





PREMIUM VILLAS WITH BEACH VIEWS





THE PULSE BEACHFRONT COMMUNITY





THE PULSE BEACHFRONT - CENTRAL PARK





THE PULSE BEACHFRONT - CENTRAL PARK





## AMENITIES/ FEATURES

### VILLA FEATURES

- Spacious 3, 4 & 5 BR Villas
- All master-bedrooms
- Fully-equipped closed kitchens
- Gated entrance & private gardens

### COMMUNITY AMENITIES

- Turquoise sandy beach pool
- Fitness club, yoga studio and lap pool
- Childrens' waterpark, Kids' club & skate park
- Basketball, padel tennis and flow rider
- Lush greenery and open parks





PHASE 1 COMMUNITY ENTRANCE





PATHWAYS TO THE CENTRAL PARK





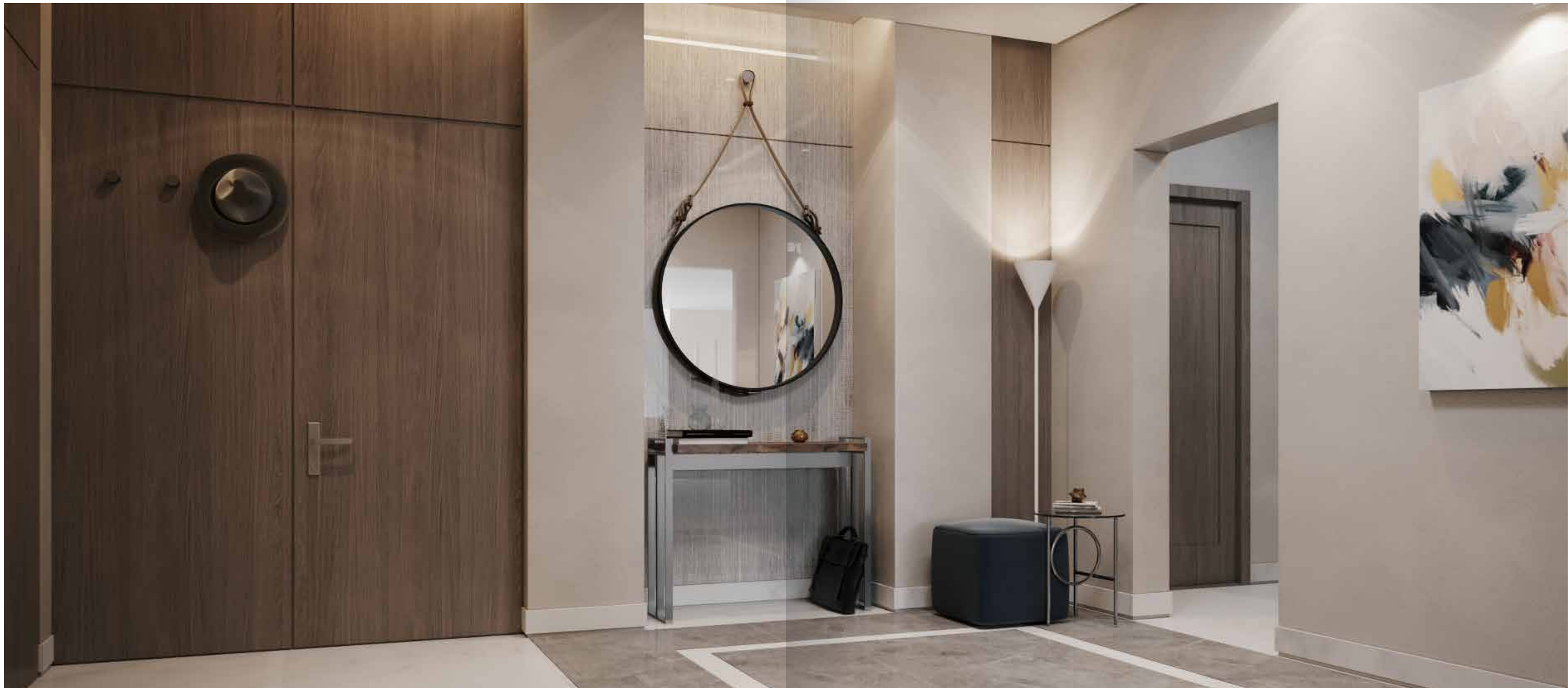
4 BR & 5 BR VILLAS





GATED ENTRANCE & PRIVATE GARDENS





ENTRANCE LOBBY





FORMAL LIVING AREA & DINING





HYBRID KITCHEN & FORMAL DINING





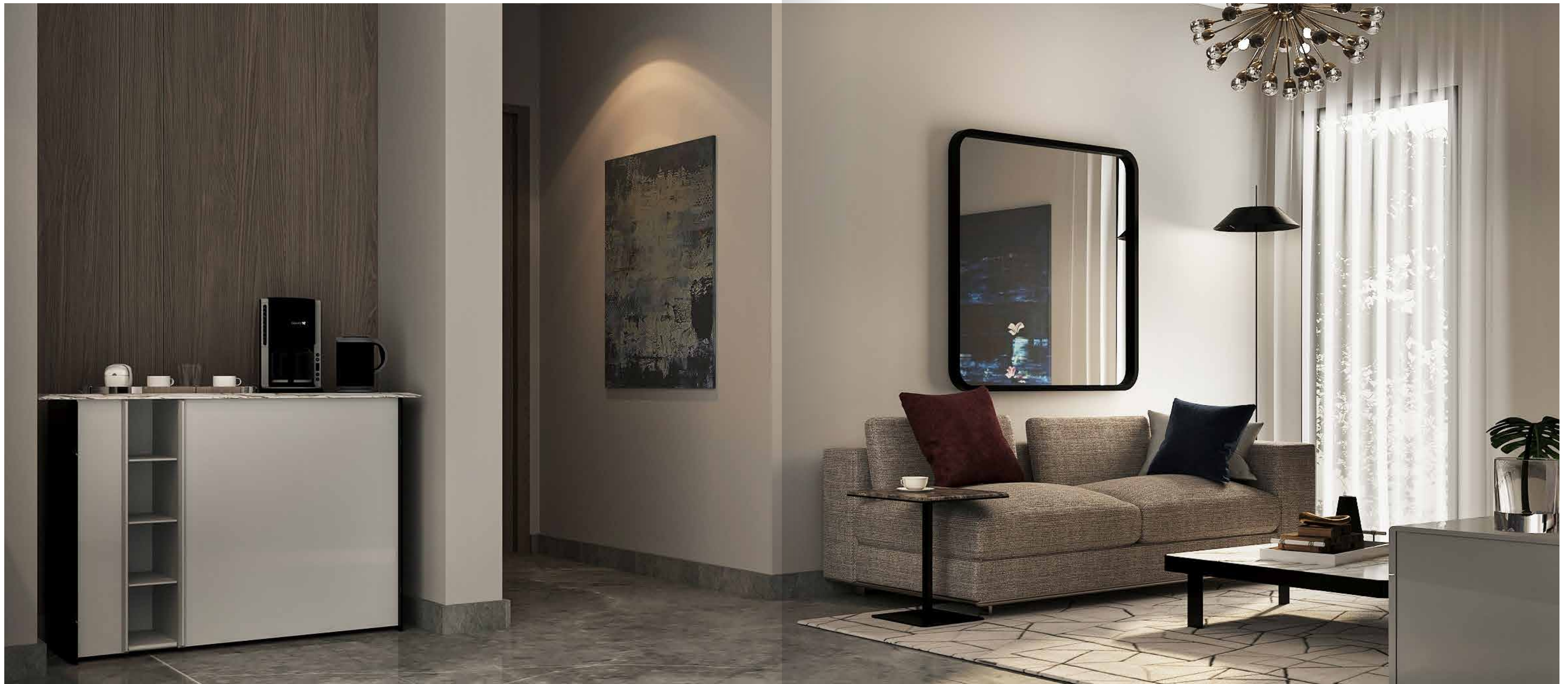
FULLY-EQUIPPED CLOSED KITCHENS WITH GARDEN ACCESS





STUDY ROOM





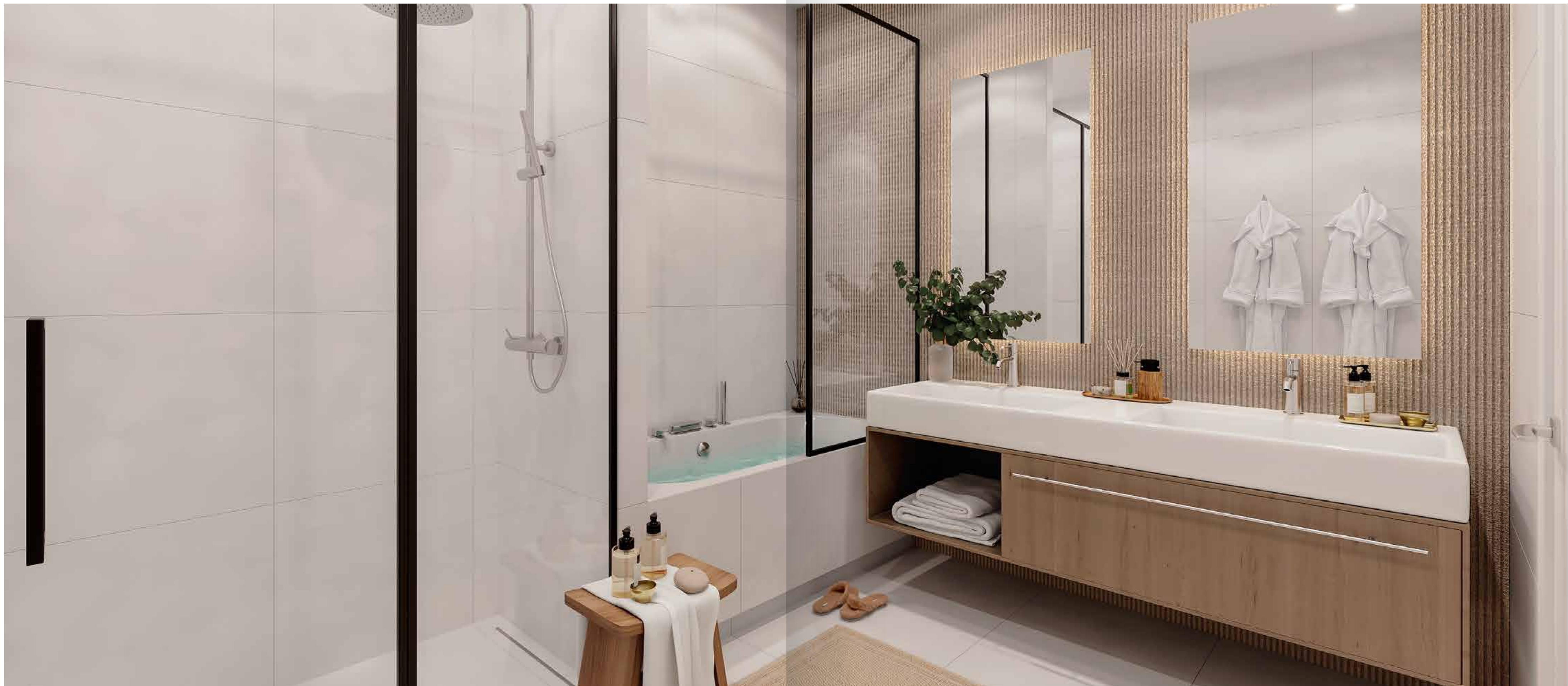
FIRST FLOOR FAMILY LOUNGE





MASTER BEDROOMS





MASTER BATHROOMS





LUSH GREENERY AND OPEN PARKS





FITNESS CLUB, YOGA STUDIO & LAP POOL



# THE PULSE BEACHFRONT

A development by



**800 SOUTH (76884)**

